

A woman with long dark hair and light makeup is sitting on a dark brown leather chair. She is wearing a black and red lace dress with a large black bow at the bust. Her right hand is resting on her lap, and her left hand is raised near her face. The background is dark and out of focus.

COQUETTE®

Holiday 2013







3557

Corset

1 PC. Velveteen corset with scalloped French lace front panels with scattered rhinestones.

Features center front satin hook & eye closure, center back ribbon lace up and removable straps and garters.

Black
S, M, L

Shown With:
Panty (102)
Stocking (1775)





3558

Bustier

1 PC. Velveteen bustier with padded cups gathered at center front, scalloped French lace panels with scattered rhinestones and lycra back panels. Features center back hook & eye closure and removable straps and garters.

Black
S, M, L

Shown With:
G-string (100)
Stockings (1775)
Gloves (1773)



NEW



3559

Babydoll & G-string

2 PC. Molded cup velveteen babydoll with rhinestone strap motif at center front and mesh skirt with scattered rhinestones. Features adjustable straps and center back hook & eye closure. Includes velveteen G-string.

Black
S, M, L





3560

Dress

1 PC. Lycra dress with sheer nylon pleated overlay and padded cups. Features satin bow with snowflake gem at side and removable straps.

Black
S, M, L



NEW



3561

Corset

1 PC. Stretch lace corset with velveteen front panels and two ribbon lace up panels at back. Features center front hook & eye closure and removable straps and garters.

Black
S, M, L

Shown With:
G-string (100)
Stockings (1775)
Gloves (1773)







3562

Bustier

1 PC. Powernet bustier with padded sequin cups with large sequin bow at center front, elasticized sequin waistband and ruffled sequin trimmed tulle hem. Features center back hook & eye closure and removable straps and garters.

Black
S, M, L

Shown With:
G-string (100)
Stockings (1783)
Gloves (1770)





3563

Chemise

1 PC. Mesh and lycra chemise with lined sequin front panel and halter straps, satin padded cups and ruffled sequin trimmed tulle hem. Features a satin bow at center front, lycra back panel and sequin strap across the back.

Black
S, M, L



NEW



3564

Dress

1 PC. Mesh off the shoulder long sleeved dress with sequin trim at neckline and sleeve openings.

Black
O/S

Shown With:
G-string (100)







3394

Waist Cincher

1 PC. Stretch lace waist cincher with hook & eye front and center back ribbon lace up. Features boning and removable garters.

Black, Red
S, M, L

Shown With:
Bra and Thong (3644)
Stockings (1706)



NEW

+



3393

Bustier

1 PC. Stretch lace bustier with mesh and lace ruffled hem and lace trimmed underwire cups. Features boning, adjustable straps, removable garters, center back hook & eye closure, elasticized waist and 3 satin bows.

Black, Red
S, M, L, XL, 1X/2X

Shown With:
G-string (100)
Stockings (1732)



NEW

+



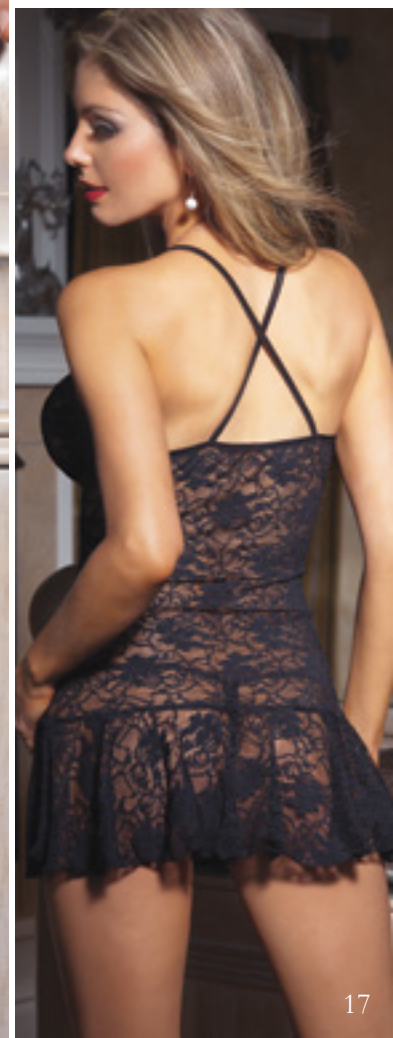
3395

Chemise

1 PC. Stretch lace chemise with gathered bust and circle skirt.

Black, Red
OS, OS/XL

Shown With:
G-string (100)





3396

Babydoll & G-string

2 PC. Stretch lace babydoll with lace trimmed underwire cups and ruffled lace hem. Features adjustable straps, center back hook & and eye closure with keyhole and center front satin bow. Includes matching G-string.

Black, Red
S, M, L, XL





NEW



3397

Bustier

1 PC. Fully boned satin bustier with lace over satin padded cups, lace wrap around panels, center front busk closure and center back ribbon lace up. Features gathered lace along top edge, removable gathered satin garters, bows and straps.

Fuchsia/Black
S, M, L, XL, 1X/2X

Shown With:
Panty (300)
Stockings (1732)





3398

Chemise

1 PC. Mesh chemise with lace over satin padded cups, gathered lace trim along top edge and stretch lace hem panels. Features adjustable straps, removable garters, 4 small satin bows at garter loops and 1 large removable satin bow at center front.

Fuchsia/Black
S, M, L

Shown With:
G-string (100)
Stockings (1706)







3399

Babydoll & G-string

2 PC. Scalloped lace over satin babydoll with padded underwire cups and mesh skirt. Features adjustable straps, powernet back band, center back hook & eye closure with keyhole and removable bow at center front. Includes matching lace over satin G-string.

Fuchsia/Black
S, M, L







3554

Corset

1 PC. Powernet over lycra corset with starburst mesh over lycra front panels, and two contrasting ribbon lace up panels at back. Features satin hook & eye closure at center front and removable straps and garters.

Black/Silver
S, M, L, XL

Shown With:
Stockings (1706)
Gloves (1770)
Panty (135)





3555

Chemise

1 PC. Starburst mesh chemise with contrasting lycra padded cups with lace trim. Features adjustable straps and marrow hem.

Black/Silver
S, M, L

Shown With:
G-string (100)



NEW

+



3556

Babydoll & G-string

2 PC. Starburst mesh babydoll with lycra triangle cups and multi-strap criss cross detailing. Features silver jewel at center front and marrow hem. Includes matching starburst mesh G-string.

Black/Silver
O/S, OS/XL





3668

Bra, Garter Belt & G-string

3 PC. Stretch lace and lycra underwire bra and garter belt. Features rhinestone trim detail, satin bows, back closure and adjustable straps & garters, includes G-string.

Black/Silver
S, M, L

Shown With:
Stockings (1775)





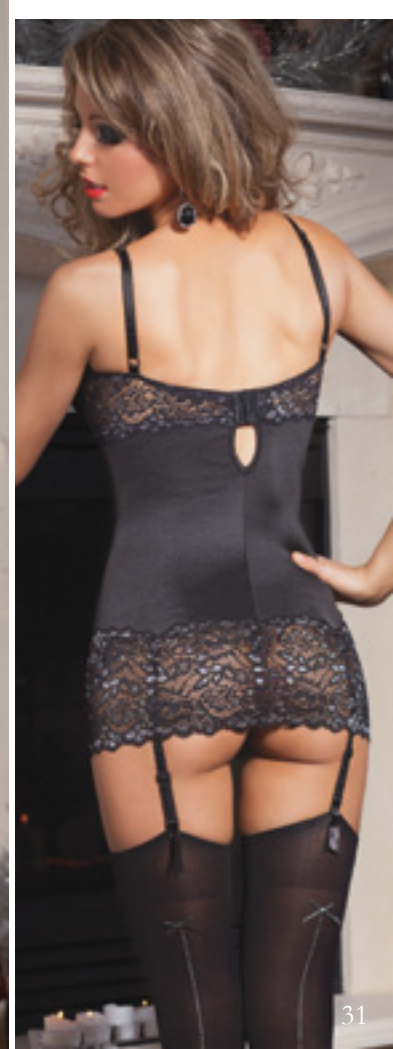
3669

Chemise

1 PC. Stretch lace and lycra chemise with padded underwire cups, rhinestone trim detail, back hook & eye closure, removable garters and adjustable straps.

Black/Silver
S, M, L, XL

Shown With:
G-string (100)
Stockings (1775)





3670

Dress

1 PC. Lycra dress with scalloped stretch lace featuring gathered panels, front rhinestone detail and adjustable straps.

Black/Silver
S, M, L





3671

Corset

1 PC. Fully boned taffeta/lycra corset with padded cups, hook & eye back closure, removable bow, straps and garters. Features rhinestone trim detail.

Black/Silver
S, M, L

Shown With:
Thong (149)
Stockings (1783)



+

—

3672

Dress

1 PC. Lycra dress with gathered padded cups, removable straps, rhinestone trim detail and satin ribbon ties in back.

Black/Silver
S, M, L, XL, 1X/2X



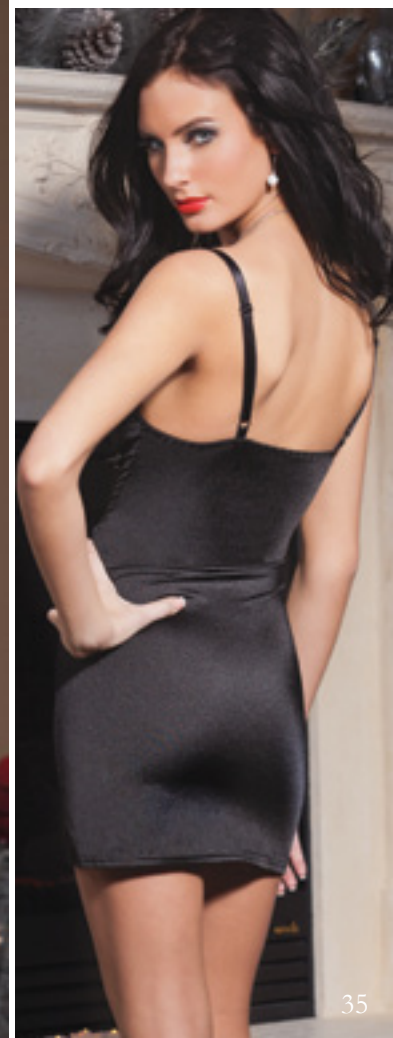


3673

Dress

1 PC. Lycra dress with molded cups. Features front lace up detail and rhinestone trim on adjustable straps.

Black/Silver
S, M, L





3642

Corset

1 PC. Flocked damask print corset with center back powernet panels, boning, velvet detailing on cups and boning covers and center back hook & eye closure. Corset features marabou hem, removable brooch at center front and removable rhinestone chain straps and garters.

Black
S, M, L, XL

Shown With:
G-string (100)
Stockings (1775)





3643

Babydoll & G-string

2 PC. Mesh babydoll with a marabou hem, center back hook & eye closure and keyhole detailing. Features flocked damask print padded cups with underwire, removable velvet rhinestone studded straps, center front broach and matching flocked damask print G-string.

Black

S, M, L, XL, 1X/2X



3644

Bra & Thong

2 PC. Powernet bra with flocked damask detailing, underwire and center back hook & eye closure. Features removable velvet rhinestone studded straps and removable center front broach. Includes matching flocked damask thong with adjustable velvet rhinestone studded straps, center back satin bow with dangling rhinestone and keyhole detailing.

Black
S, M, L, XL





3685

Corset

1 PC. Velveteen and powernet corset with boning, padded cups and center back hook & eye closure. Corset features decorative satin tuxedo flaps on cups, 2 rhinestone buttons at center front and removable straps and garters.

Black
S, M, L, XL, 1X/2X

Shown With:
Panty (147)
Stockings (1706)



3687

Bra & Booty Short

2 PC. Velveteen and powernet bra with padding, underwire and center back hook & eye closure. Features decorative satin tuxedo flaps on cups and 2 rhinestone buttons at center front. Set includes matching booty shorts with center front rhinestone button detail.

Black
S, M, L, XL





3686

Babydoll

1 PC. Sweetheart satin and powernet babydoll with 3 tier ruffled lace hem, velvet elasticized waistband and center back hook & eye closure. Babydoll features boning, removable straps and satin bow broach.

Black
S, M, L

Shown With:
Panty (300)







3659

Dress

1 PC. Lycra dress with scalloped lace detail and gathered top with contrast removable bow.

Black/Red
S, M, L, XL







3385

Corset

1 PC. Fully boned powernet over lycra corset with ruffled mesh trim along the top and bottom hem. Features center front hook & eye closure, contrasting lace up detail in the back and removable straps and garters.

Black/Red
S, M, L, XL,
1X/2X, 3X/4X

Shown With:
Panty (115)
Stockings (1726)





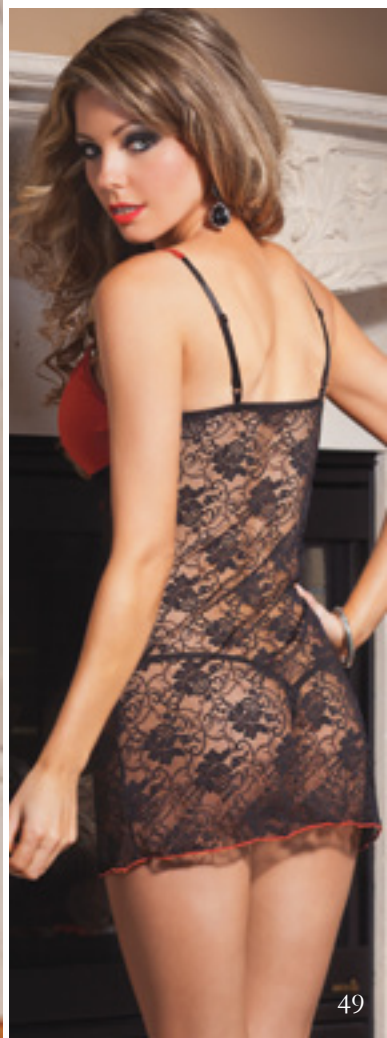
3674

Chemise

1 PC. Taffeta and stretch lace chemise with bow detail on padded cups and flounced hem.

Black/Red
S, M, L

Shown With:
G-string (100)



3677

Bustier

1 PC. Woven pinstripe bustier with padded underwire cups, center back lycra panels and hook & eye closure. Bustier features center front contrasting satin bow with rhinestone button, stretch lace detailing on cups and cutouts at waist, and removable straps and garters.

Black/Red
S, M, L

Shown With:
G-string (100)
Stockings (1767)





3678

Cami Top

1 PC. Woven pinstripe cami top with underwire padded cups, flounce skirt, center back lycra panels and hook & eye closure. Cami top features removable straps and contrasting sash at waist.

Black/Red
S, M, L

Shown With:
Panty (148)





3680

Chemise

1 PC. Microfibre chemise with woven pinstripe padded cups and underwire, contrasting lace up on cups and center back hook & eye closure with keyhole opening. Chemise features adjustable straps and center front contrasting satin bow with rhinestone button.

Black/Red
S, M, L, XL, 1X/2X





3681

Babydoll & G-string

2 PC. Woven pinstripe babydoll with underwire padded cups, center back hook & eye closure with keyhole cutout and stretch lace flounce. Babydoll features adjustable straps with contrasting bows and center front bow with rhinestone button. Includes a matching woven pinstripe G-string.

Black/Red
S, M, L, XL, 1X/2X





NEW



3393

Bustier

1 PC. Stretch lace bustier with mesh and lace ruffled hem and lace trimmed underwire cups. Features boning, adjustable straps, removable garters, center back hook & eye closure, elasticized waist and 3 satin bows.

Black, Red
S, M, L, XL, 1X/2X

Shown With:
G-string (100)
Stockings (1706)





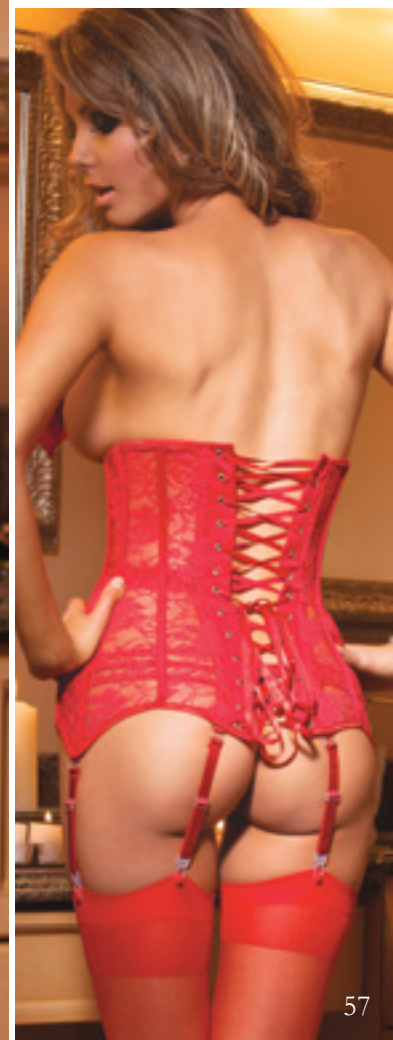
3394

Waist Cincher

1 PC. Stretch lace waist cincher with hook & eye front and center back ribbon lace up. Features boning and removable garters.

Black, Red
S, M, L

Shown With:
Thong (149)
Stockings (1706)
Pasties (1748)



NEW



3395

Chemise

1 PC. Stretch lace chemise with gathered bust and circle skirt.

Black, Red
O/S, OS/XL

Shown With:
G-String (100)





3396

Babydoll & G-string

2 PC. Stretch lace babydoll with lace trimmed underwire cups and ruffled lace hem. Features adjustable straps, center back hook & eye closure with keyhole and center front satin bow. Includes matching G-string.

Black, Red
S, M, L, XL





3381

Chemise

1 PC. Mesh/lycra chemise with padded underwire cups, gathered lace hem detail, 3 removable bows, adjustable straps and removable garters.

Pink/Black
S, M, L, XL

Shown With:
Stockings (1706)
G-string (100)



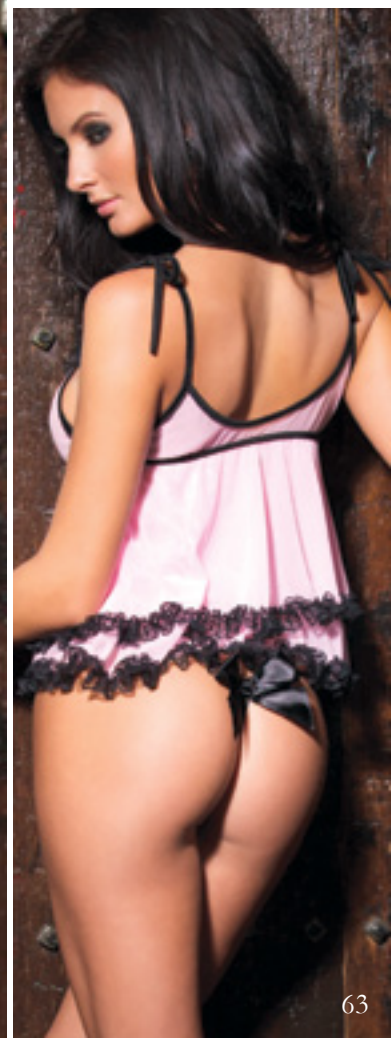


3380

Babydoll & G-string

2 PC. Double layer ruffle mesh babydoll with lycra binding shoulder straps. Features bow and lace trim detail and matching G-string.

Pink/Black
O/S, OS/XL



3382

Corset

1 PC. Fully boned lycra/mesh corset with gathered mesh padded cups and hem detail.

Removable bows, straps and garters.

Pink/Black
S, M, L

Shown With:
Shorts (114)
Stockings (1706)





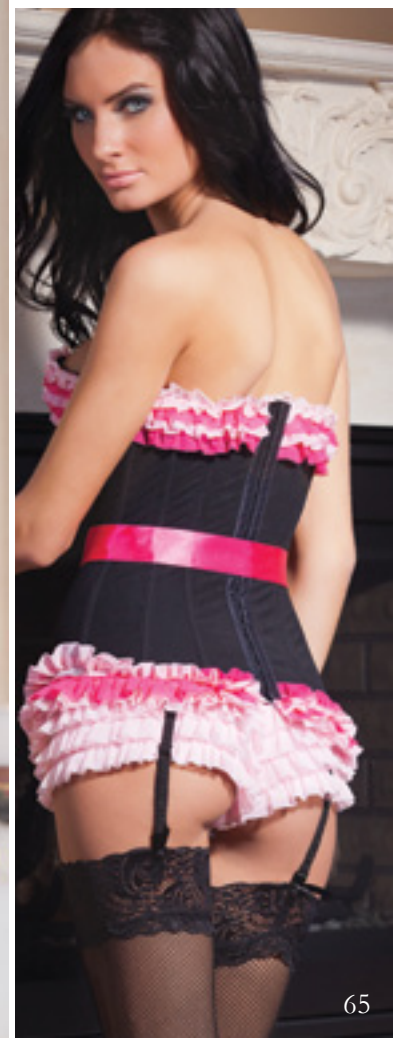
3383

Corset

1 PC. Fully boned powernet over lycra corset with multiple tiers of contrasting ruffled mesh trim along the top and bottom hem and center back hook & eye closure. Features removable straps, garters and contrasting sash.

Black/Fuchsia
S, M, L, XL

Shown With:
Shorts (114)
Stockings (1732)





3384

Dress

1 PC. Lycra tube dress featuring front boning with contrasting covers, side front bow detail and removable straps.

Black/Fuchsia
S, M, L, XL





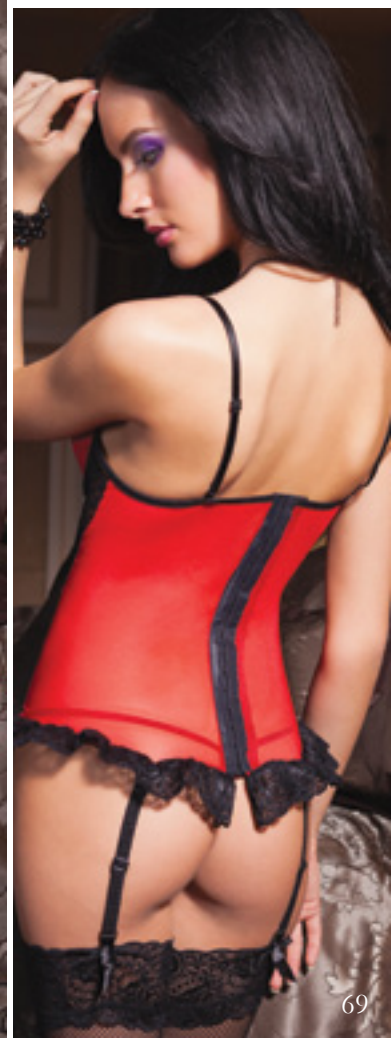
3390

Bustier

1 PC. Mesh bustier with lace side front panels, trim and ruffled lace hem. Includes center back hook & eye closure, front boning and underwire also featuring adjustable straps and removable garters.

Red/Black
S, M, L, XL

Shown With:
G-string (100)
Stockings (1732)



3391

Chemise

1 PC. Lace over lycra padded bra cups with front lace detailing and contrasting mesh.

Chemise features adjustable straps and contrasting ribbon lace up at back.

**Red/Black
S, M, L**

Shown With:
G-string (100)



3392

**Babydoll &
G-string**

2 PC. Mesh and lace babydoll with underwire cups, center back hook & eye closure and keyhole. Featuring adjustable straps and matching mesh and lace G-string.

Red/Black
S, M, L, XL,
1X/2X, 3X/4X



3387

Corset

1 PC. Fully boned stretch lace over lycra corset with multiple tiers of ruffled mesh trim along the top and bottom hem and a center back hook & eye closure. Corset features removable straps, garters and sash with "Valentine Bear" broach.

Red
S, M, L, XL, 1X/2X

Shown With:
Booty Short (102)
Stockings (1706)



3388

**Babydoll &
G-string**

2 PC. Two tier mesh babydoll with stretch lace over lycra padded cups, adjustable straps, center back hook & eye closure and keyhole opening. Babydoll features center front bow with “Valentine Bear” broach and matching stretch lace over lycra G-string.

Red
S, M, L, XL, 1X/2X



NEW



3567

Chemise

1 PC. Cotton chemise with gathered bust, contrasting under bust band and stretch lace hem. Features gathered lace trim on neckline and adjustable straps with 2 small satin bows.

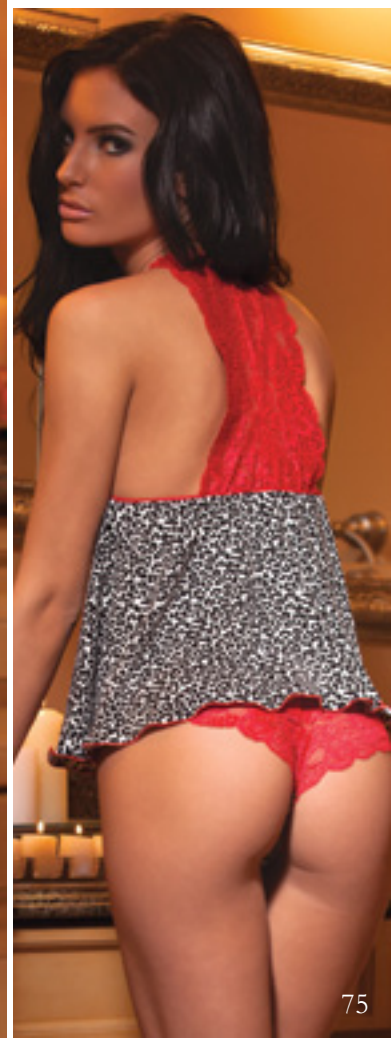
Red/Black
O/S, OS/XL



3565**Babydoll & Panty**

2 PC. Cotton babydoll with lace back panels, center front gathered bust with bow and heart gem and contrasting marrow hem. Includes matching panty with lace back and bow with heart gem at center front.

Grey Leopard/Red
O/S, OS/XL



NEW



3566

Booty Short

1 PC. Cotton booty short with lace waistband, contrasting marrow hem and center front satin bow.

Grey Leopard/Red
O/S, OS/XL





3568

Chemise

1 PC. Mesh and lycra chemise with lined sequin front panel and molded cups, PVC detailing and faux fur trim hem.

Features removable PVC bow at center front, 2 satin bows at hem, center back hook & eye closure with keyhole, adjustable straps and removable garters.

Red/Black
S, M, L

Shown With:
G-string (100)
Stockings (1763)

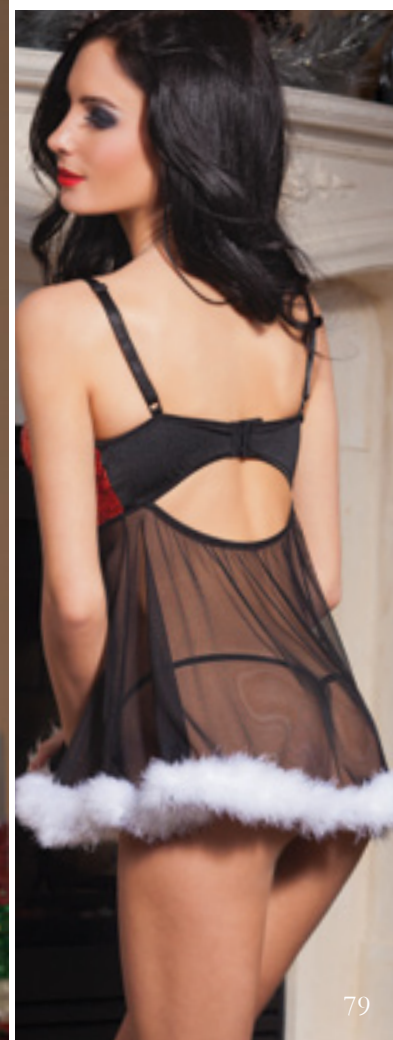


3569

**Babydoll &
G-string**

2 PC. Lined sequin molded cup babydoll with PVC detailing, mesh skirt and lycra back band with hook & eye closure and keyhole. Features removable PVC bow at center front, contrasting faux fur trim at hem and adjustable straps. Includes lined sequin G-string.

Red/Black
S, M, L



3570

Halter Dress

1 PC. Lycra halter dress with faux fur collar and deep “V” PVC center front neckline with ribbon lace up.

Red/Black
S/M, M/L

Shown With:
Gloves (3657)
Stockings (1733)





3636

Romper

2 PC. Stretch velvet/fishnet romper with deep PVC “V” front with grommet and ribbon lacing. Features faux fur trim and PVC belt.

Red/White/Black
S/M, M/L

Shown With:
Hat (3431)



3637

Bra & Shorts

2 PC. Molded lycra and PVC bra with faux fur trim, center front buckle detail and adjustable straps. Matching booty short with PVC belt detail.

Red/Black/White
S, M, L

Shown With:
Gloves (3657)
Pantyhose (1761)





3648

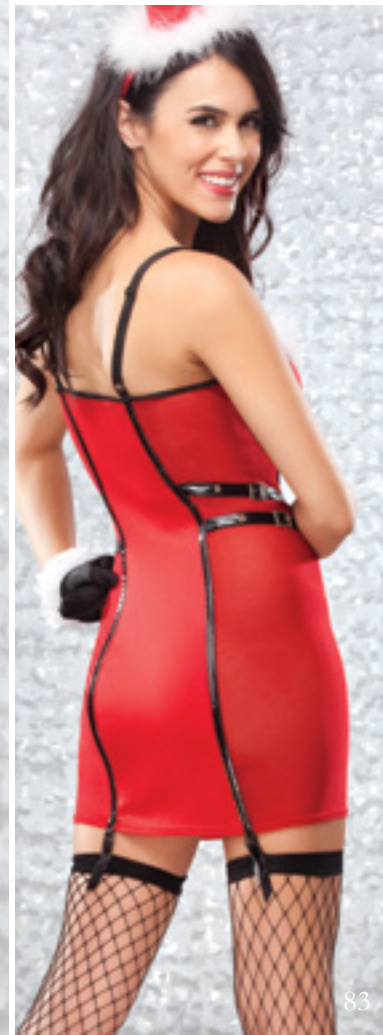
Chemise

1 PC. Lycra “Santa” chemise with mesh side panels, padded cups, underwire and contrasting faux fur trim. Chemise features adjustable PVC straps with buckles, style lines with attached garters and buckle and strap detailing at side panels. Includes removable PVC bow at center front.

Red/Black
S, M, L, XL

Shown With:
Stockings (1763)
Gloves (3657)

Hat Not Available



3660

Dress

1 PC. Satin and mesh
“Snow Man” halter
dress with decorative
ruffled trim, 3 large
buttons and faux plaid
scarf with fringe.

White
S/M, M/L

Shown With:
G-string (100)
Gloves (3657)

Hat Not Available





3481

Dress

1 PC. Stretch velvet deep V front hooded dress with faux fur trim.

Red/White
S, M, L

Shown With:
Gloves (3485)



3487

Jacket & Shorts

2 PC. Stretch velvet jacket with faux fur trimmed hood and elastic belted shorts with buckle.

Red/White
S, M, L





PERFECTLY PLUS

NEW

+

3392

Babydoll & G-string

2 PC. Mesh and lace babydoll with underwire cups, center back hook & eye closure and keyhole. Featuring adjustable straps and matching mesh and lace G-string.

Red/Black
S, M, L, XL,
1X/2X, 3X/4X



NEW

+



3393

Bustier

1 PC. Stretch lace bustier with mesh and lace ruffled hem and lace trimmed underwire cups. Features boning, adjustable straps, removable garters, center back hook & eye closure, elasticized waist and 3 satin bows.

Black, Red
S, M, L, XL, 1X/2X

Shown With:
Booty Short (102)



NEW

+

3395

Chemise

1 PC. Stretch lace chemise with gathered bust and circle skirt.

Black, Red
O/S, OS/XL

Shown With:
G-string (100)



NEW

+

3567

Chemise

1 PC. Cotton chemise with gathered bust, contrasting under bust band and stretch lace hem. Features gathered lace trim on neckline and adjustable straps with 2 small satin bows.

Red/Black
O/S, OS/XL





NEW



3556

Babydoll & G-string

2 PC. Starburst mesh babydoll with lycra triangle cups and multi-strap criss cross detailing. Features silver jewel at center front and marrow hem. Includes matching starburst mesh G-string.

Black/Silver
O/S, OS/XL



NEW



3565

Babydoll & Panty

2 PC. Cotton babydoll with lace back panels, center front gathered bust with bow and heart gem and contrasting marrow hem. Includes matching panty with lace back and bow with heart gem at center front.

Grey Leopard/Red
O/S, OS/XL



NEW



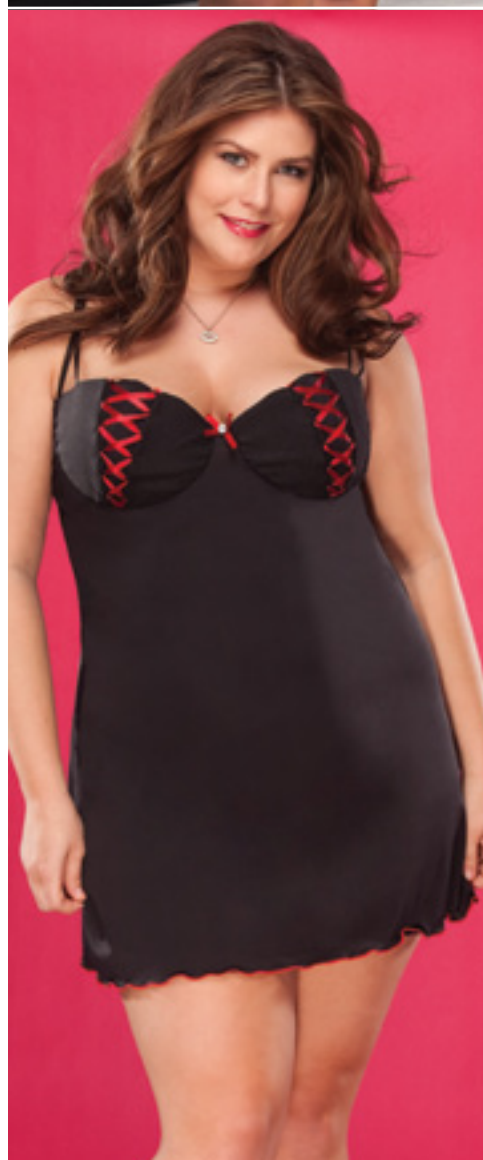
3397

Bustier

1 PC. Fully boned satin bustier with lace over satin padded cups, lace wrap around panels, center front busk closure and center back ribbon lace up. Features gathered lace along top edge, removable gathered satin garters, bows and straps.

Fuchsia/Black
S, M, L, XL, 1X/2X

Shown With:
Gloves (1705)
Panty (114)
Stockings (1726)



3680

Chemise

1 PC. Microfibre chemise with woven pinstripe padded cups and underwire, contrasting lace up on cups and a center back hook & eye closure with a keyhole opening. Features adjustable straps and center front contrasting satin bow with rhinestone button.

Black/Red
S, M, L, XL, 1X/2X

+

3385

Corset

1 PC. Fully boned powernet over lycra corset with ruffled mesh trim along the top and bottom hem. Features center front hook & eye closure, contrasting lace up detail in the back and removable straps and garters.

Black/Red
S, M, L, XL,
1X/2X, 3X/4X

Shown With:
Skirt (3386)
Pantyhose (1761)

Shrug & Gloves Not Available



+

3387

Corset

1 PC. Fully boned stretch lace over lycra corset with multiple tiers of ruffled mesh trim along top and bottom hem and center back hook & eye closure. Corset features removable straps, garters and sash with "Valentine Bear" broach.

Red
S, M, L, XL, 1X/2X

Shown With:
Skirt (706)



+

3388

Babydoll & G-string

2 PC. Two tier mesh babydoll with stretch lace over lycra padded cups, adjustable straps, center back hook & eye closure and keyhole opening. Babydoll features center front bow with "Valentine Bear" broach and matching stretch lace over lycra G-string.

Red
S, M, L, XL, 1X/2X



+

3681

Babydoll & G-string

2 PC. Woven pinstripe babydoll with underwire padded cups, center back hook & eye closure with keyhole cutout and stretch lace flounce. Babydoll features adjustable straps with contrasting bows and center front bow with rhinestone button. Includes matching woven pinstripe G-string.

Black/Red
S, M, L, XL, 1X/2X





3643



Babydoll & G-string

2 PC. Mesh babydoll with marabou hem, center back hook & eye closure and keyhole detailing. Features flocked damask print padded cups with underwire, removable velvet rhinestone studded straps, center front brooch and matching flocked damask print G-string.

Black
S, M, L, XL, 1X/2X



3672



Dress

1 PC. Lycra dress with gathered padded cups, removable straps, rhinestone trim detail and satin ribbon ties in back.

Black/Silver
S, M, L, XL, 1X/2X



3685



Corset

1 PC. Velveteen and powernet corset with boning, padded cups and center back hook & eye closure. Corset features decorative satin tuxedo flaps on cups, 2 rhinestone buttons at center front and removable straps and garters.

Black
S, M, L, XL, 1X/2X

Shown With:
Gloves (1705)
Stockings (1706)
Skirt Not Available



3380



2 PC. Double layer ruffle mesh babydoll with lycra binding shoulder straps. Features bow and lace trim detail and matching G-string.

Pink/Black
O/S, OS/XL

Shown With:
G-string (100)



147 • Panty

NEW +

1 PC. All over stretch lace panty with side front ruching and 2 small bows.

Black

O/S, OS/XL

148 • Panty

NEW +

1 PC. Seamless microfiber panty.

Black, Red

O/S, OS/XL



149 • Panty

NEW +

1 PC. Lycra thong with front scalloped lace waistband and back elastic strap detailing.

Black, Red • O/S, OS/XL

150 • G-string

NEW +

1 PC. Scalloped lace G-string with 2 small contrasting bows and elastic waistband.

Black/Fuchsia • O/S, OS/XL



151 • Panty

NEW +

1 PC. Mesh panty with contrasting scalloped lace trim and center front polka dot bow.

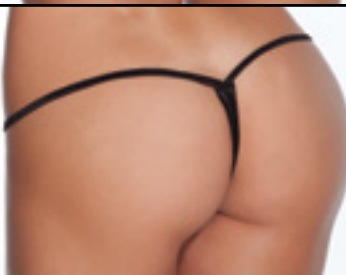
Red/White • O/S, OS/XL

152 • Crotchless Panty

NEW +

1 PC. Flocked heart crotchless panty with scalloped lace trim and small velvet bow at center front.

Black/Red • O/S, OS/XL



3566 • Booty Short

NEW +

1 PC. Leopard print cotton booty short with lace waistband, contrasting marrow hem and center front satin bow.

Grey Leopard/Red • O/S, OS/XL

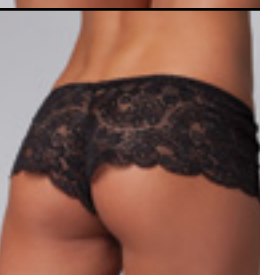
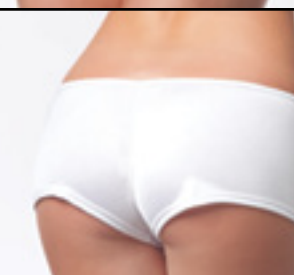
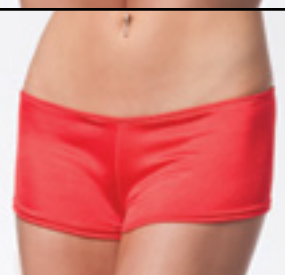
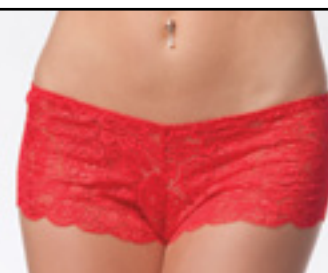
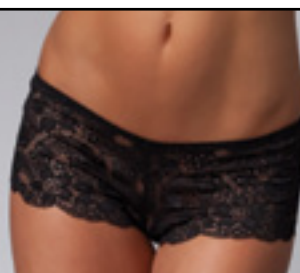
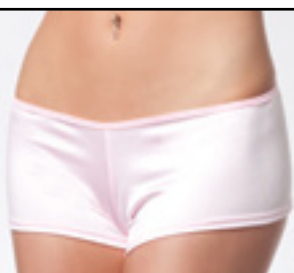
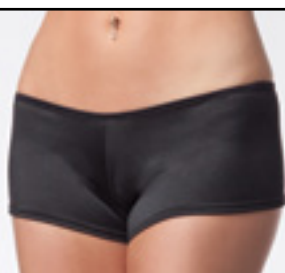
100 • G-string

+

1 PC. Low rise lycra G-string.

Black, Red, White

O/S, OS/XL



101 • Booty Short

+

1 PC. Low rise lycra booty short.

Black, Pink, Red, White

O/S, OS/XL

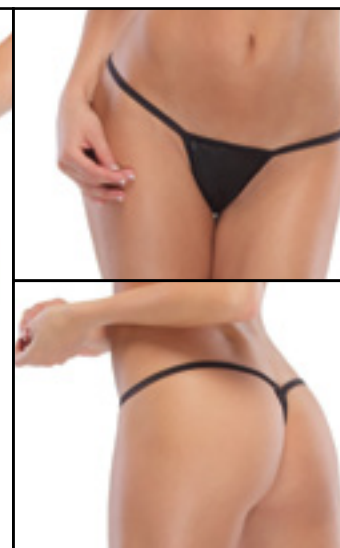
102 • Booty Short

+

1 PC. Low rise lace booty short.

Black, Red, White

O/S, OS/XL



105 • Booty Short

+

1 PC. Wet look stretch booty shorts.

Black

O/S, OS/XL

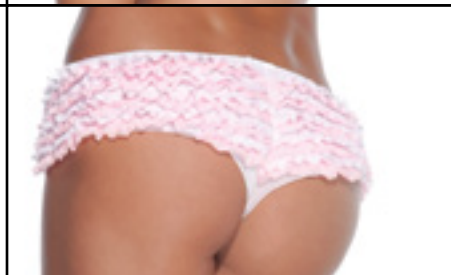
106 • G-string

+

1 PC. Low rise wet look G-string.

Black, Red

O/S, OS/XL



114 • Shorts +

1 PC. Ruffle shorts with back bow detail.

Black, Pink, Red, White

XS, O/S, OS/XL

115 • Panty +

1 PC. Two toned ruffled panty with center front bow.

Black/Purple, Black/Red, White/Blue, White/Pink

O/S, OS/XL



116 • Panty +

1 PC. Low rise lace panty with pearl crotch detail.

Black, White

O/S, OS/XL

118 • Panty +

1 PC. Polka dot mesh panty with satin ribbon side ties and ruffle bum detail.

Black

O/S, OS/XL



134 • Crotchless Panty +

1 PC. Crotchless ruffle mesh panty with center front satin bow.

Black

O/S, OS/XL

135 • Crotchless Panty +

1 PC. Crotchless stretch lace panty with center front satin bow.

Black/Silver, Red

O/S, OS/XL



136 • Crotchless Panty +

1 PC. Stretch lace crotchless panty with velvet elastic waistband.
Green/Black
O/S, OS/XL

138 • Crotchless Thong +

1 PC. Crotchless mesh thong with stretch lace waistband and contrasting center front bow.
Black, White • O/S, OS/XL



139 • Crotchless Booty Short +

1 PC. Scalloped stretch lace crotchless booty short.
Black, Red
O/S, OS/XL

140 • Thong +

1 PC. Mesh thong with scalloped stretch lace waistband.
Black, Red, White
O/S, OS/XL



142 • Crotchless Panty +

1 PC. Floral print lace crotchless panty with center front satin bow.
Black, Fuchsia, Red, White
O/S, OS/XL

145 • Thong +

1 PC. Stretch lace thong with scalloped stretch lace waistband.
Black, Red, White
O/S, OS/XL



300 • Panty

1 PC. Lace ruffle and sheer panty.

Black

O/S



203 • Crotchless Panty +

1 PC. Coquette classic crotchless panty with bow detail.

Black, Red, White, Assorted

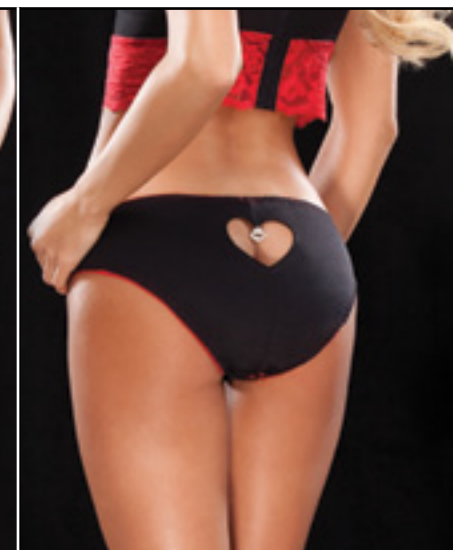
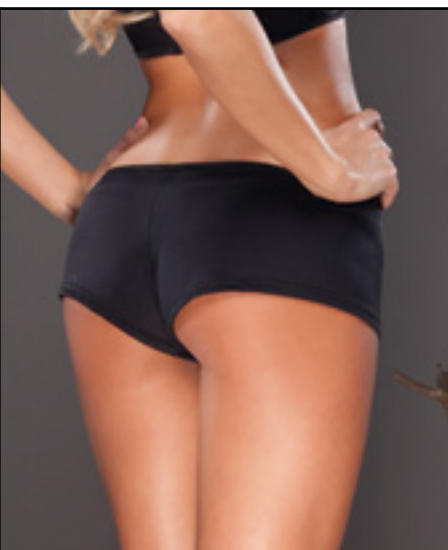
O/S, OS/XL

3412 • Crotchless Panty +

1 PC. Mesh gathered back panty with satin ribbon detail and Santa Bells.

Red

O/S, OS/XL



3647 • Booty Short +

1 PC. Lycra booty shorts featuring 2 keyhole cutouts and 2 satin bows with dangling rhinestones.

Black • O/S, OS/XL

3682 • Panty

1 PC. Woven pinstripe and lycra panty with contrasting elastic. Features heart shape cutout and dangling rhinestone charm.

Black/Red • S, M, L, XL



3683 • Panty +

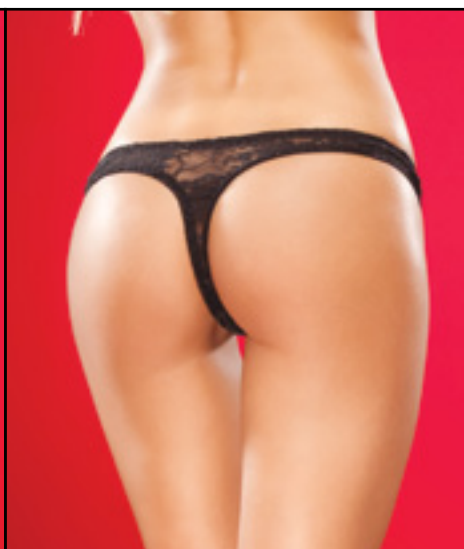
1 PC. Woven pinstripe panty with multi-strap detailing at back and a large contrasting bow.

Black/Red • O/S, OS/XL

3684 • Thong +

1 PC. Woven pinstripe thong features contrasting stretch lace detailing, binding and center front satin bow with rhinestone button.

Black/Red • O/S, OS/XL



3688 • Thong +

1 PC. Velvet, satin and stretch lace thong featuring center front rhinestone button.

Black • O/S, OS/XL



1014 • Garter Belt NEW +

1 PC. Ruffle mesh garter belt with velvet elastic waistband and center back adjustable closure.

Black • O/S, OS/XL



1015 • Garter Belt NEW +

1 PC. Scalloped stretch lace garter belt with 4 small bows, adjustable garters and center back hook & eye closure.

Black • O/S, OS/XL



407 • Garter Belt +

1 PC. French lace garter belt.

Black, Red, White
O/S, OS/XL

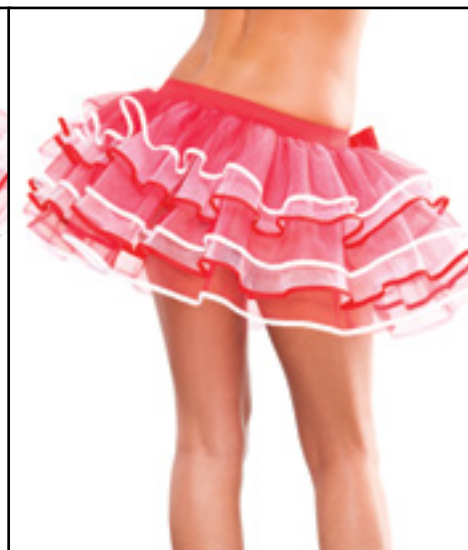


104 • Leg Garter

1 PC. Gathered lace leg garter with satin bow detail.
Black, Black/Red, Red, White/Blue
O/S

107 • Leg Garter

1 PC. Gathered ribbon leg garter with satin bow detail.
White/Black
O/S



2222 • Pettitcoat

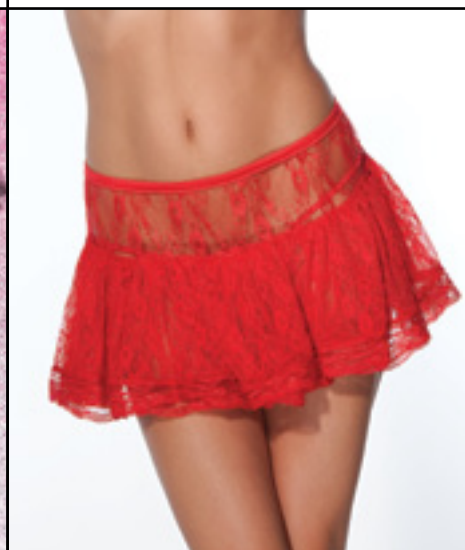
NEW

1 PC. Two toned multi layered crinoline with elasticized waistband, large side bow and contrasting trimmed hem.
Red/White • O/S

2223 • Petticoat

NEW

1 PC. Lycra and tulle petticoat with feather trim hem.
Red
O/S



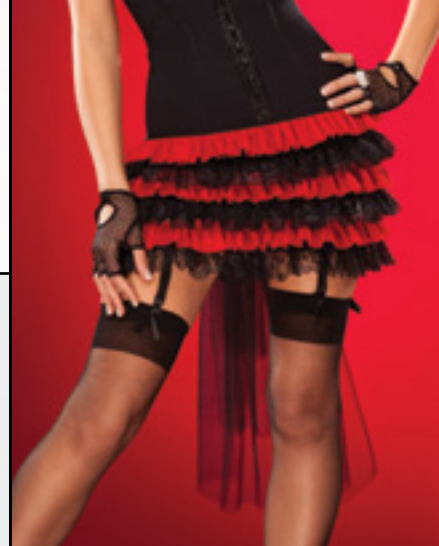
3649 • Petticoat

1 PC. Sheer nylon mini petticoat.
Black
O/S

3650 • Petticoat

+

1 PC. Rigid lace petticoat with back snap closure.
Black, Red, White
O/S, OS/XL



706 • Skirt +

1 PC. Stretch mesh ruffle mini skirt with layers of ruffles and stretch waistband.

Black, Pink, Red, White • O/S, OS/XL

3386 • Skirt +

1 PC. Multi tiered ruffle lace and mesh skirt featuring removable tulle bustle with large bow and garters.

Black/Red • O/S, OS/XL



1770 • Gloves

1 Pair. Above wrist stretch satin gloves with angled hem and ruffles.

Black • O/S



1774 • Gloves

1 Pair. Wet look gloves.

Black
O/S



1773 • Gloves

1 Pair. Lace fingerless gloves with elastic ring, satin bow and ruffled elastic trim.

Black • O/S



3485 • Gloves

1 Pair. Velvet and white faux fur trim fingerless gloves with satin bow.

Red/White
O/S



1705 • Gloves

1 Pair. Satin lycra gloves.

Black, Red, White
O/S



3657 • Gloves

1 Pair. Lycra and faux fur trim gloves.
Black/White
O/S



3431 • Santa Hat

1 PC. Stretch velvet Santa hat with faux fur trim.
Red/White
O/S



1767 • Stockings

1 Pair. Sheer stockings with front bow.
Black/Red
O/S



1777 • Stockings

1 Pair. Sheer thigh high stockings with back seam and bow detail.
Black/Red
O/S



1778 • Stockings

1 Pair. Sheer thigh high stockings with heart print, lace top and satin bow.
White/Red
O/S



1775 • Stockings

1 Pair. Opaque thigh high stockings with back seam.
Black/Silver
O/S



1754 • Stockings

1 Pair. Opaque thigh high stockings with satin bow detail.
Black
O/S



1755 • Stockings

1 Pair. Sheer thigh high stockings with faux fur and jingle bells on bow.
Red
O/S



1733 • Stockings

1 Pair. Fishnet thigh high stockings with triple elastic top.
Black, Red
O/S



1769 • Stockings

1 Pair. Fence net thigh high stockings.
Red
O/S



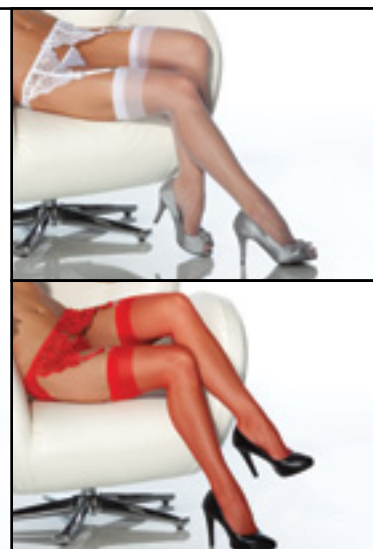
1783 • Stockings

1 Pair. Thigh high fishnet stockings with elastic sequin band.
Black
O/S



1706 • Stockings +

1 Pair. Sheer thigh high stockings.
Black, Red, White
O/S, OS/XL





1732 • Stockings +

1 Pair. Fishnet thigh high stockings with lace top.
Black
O/S, OS/XL



1726 • Stockings +

1 Pair. Sheer thigh high stockings with lace top.
Black, White
O/S, OS/XL



1763 • Stockings

1 Pair. Diamond net thigh high stockings.
Black
O/S



1761 • Pantyhose

1 Pair. Diamond net pantyhose.
Black
O/S



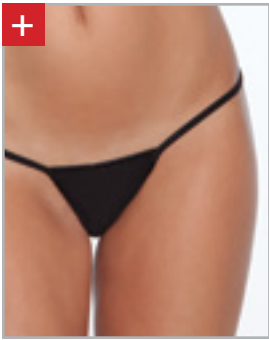
1766 • Stockings

1 Pair. Opaque contrast Cuban heel stockings with back seam.
Black/Red
O/S

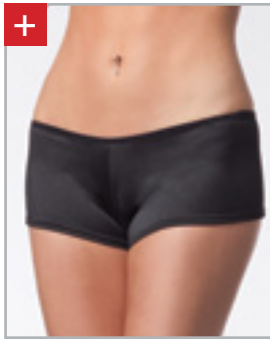


1776 • Stockings

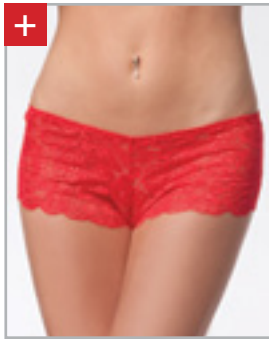
1 Pair. Sheer thigh high stockings with elastic lace top.
Black/Red
O/S

**100**Black, Red, White
O/S, OS/XL

Page 93

**101**Black, Pink, Red, White
O/S, OS/XL

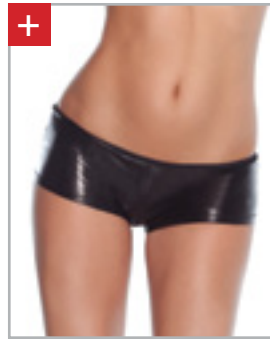
Page 93

**102**Black, Red, White
O/S, OS/XL

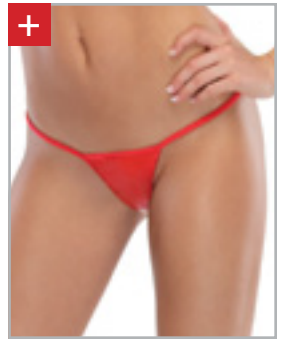
Page 93

**104**Black, Black/Red, Red,
White/Blue
O/S

Page 98

**105**Black
O/S, OS/XL

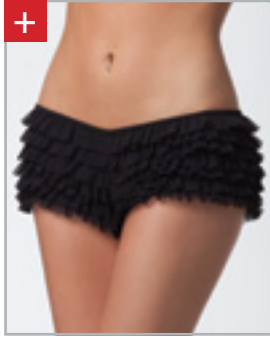
Page 93

**106**Black, Red
O/S, OS/XL

Page 93

**107**White/Black
O/S

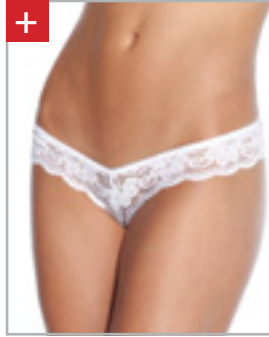
Page 98

**114**Black, Pink, Red, White
XS, O/S, OS/XL

Page 94

**115**Black/Purple, Black/
Red, White/Blue,
White/Pink
O/S, OS/XL

Page 94

**116**Black, White
O/S, OS/XL

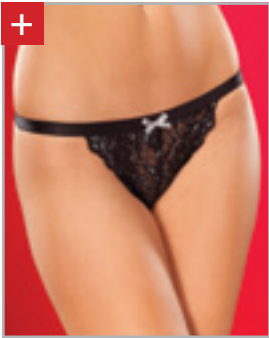
Page 94

**118**Black
O/S, OS/XL

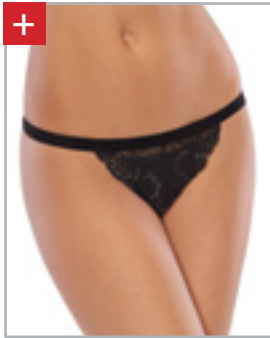
Page 94

**134**Black
O/S, OS/XL

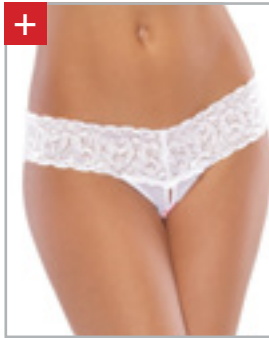
Page 94

**135**Black/Silver, Red
O/S, OS/XL

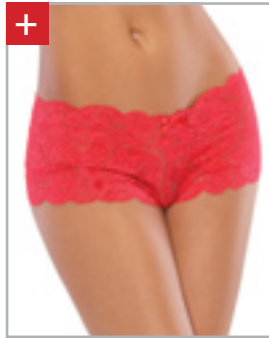
Page 94

**136**Green/Black
O/S, OS/XL

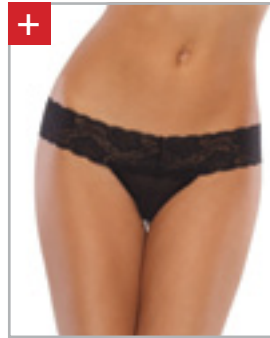
Page 95

**138**Black, White
O/S, OS/XL

Page 95

**139**Black, Red
O/S, OS/XL

Page 95

**140**Black, Red, White
O/S, OS/XL

Page 95

**142**Black, Fuchsia, Red,
White
O/S, OS/XL

Page 95

**145**Black, Red, White
O/S, OS/XL

Page 95

**147**Black
O/S, OS/XL

Page 92

**148**Black, Red
O/S, OS/XL

Page 92

**149**Black, Red
O/S, OS/XL

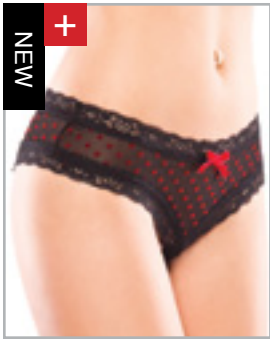
Page 92

**150**Black/Fuchsia
O/S, OS/XL

Page 92

**151**Red/White
O/S, OS/XL

Page 92



152

Black/Red
O/S, OS/XL

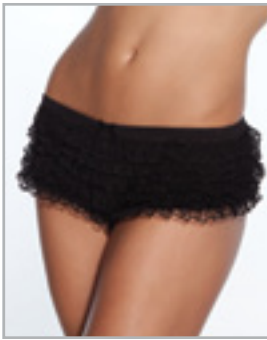
Page 92



203

Black, Red,
White, Assorted
O/S, OS/XL

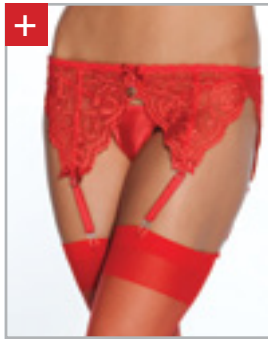
Page 96



300

Black
O/S

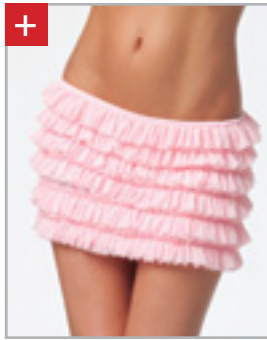
Page 96



407

Black, Red, White
O/S, OS/XL

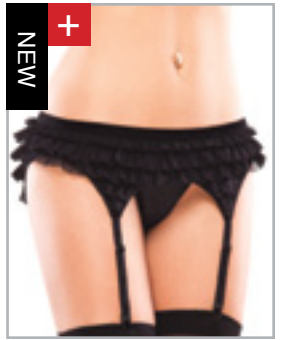
Page 97



706

Black, Pink, Red, White
O/S, OS/XL

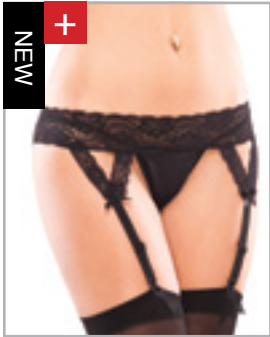
Page 99



1014

Black
O/S, OS/XL

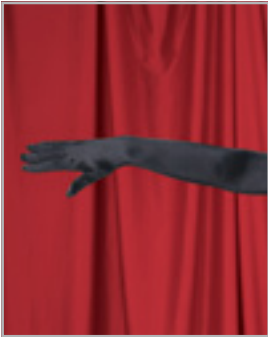
Page 97



1015

Black
O/S, OS/XL

Page 97



1705

Black, Red, White
O/S

Page 99



1706

Black, Red, White
O/S, OS/XL

Page 101



1726

Black, White
O/S, OS/XL

Page 102



1732

Black
O/S, OS/XL

Page 102



1733

Black, Red
O/S

Page 101



1754

Black
O/S

Page 101



1755

Red
O/S

Page 101



1761

Black
O/S

Page 102



1763

Black
O/S

Page 102



1766

Black/Red
O/S

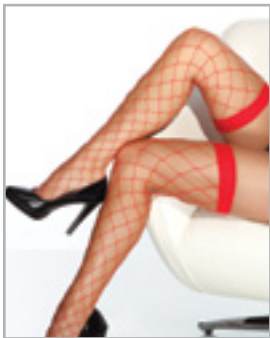
Page 102



1767

Black/Red
O/S

Page 100



1769

Red
O/S

Page 101



1770

Black
O/S

Page 99



1773

Black
O/S

Page 99



1774

Black
O/S

Page 99



1775

Black/Silver
O/S

Page 100



1776

Black/Red
O/S

Page 102



1777

Black/Red
O/S

Page 100



1778

White/Red
O/S

Page 100



1783

Black
O/S

Page 101



2222

Red/White
O/S

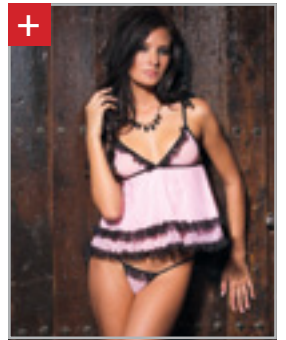
Page 98



2223

Red
O/S

Page 98



3380

Pink/Black
O/S, OS/XL

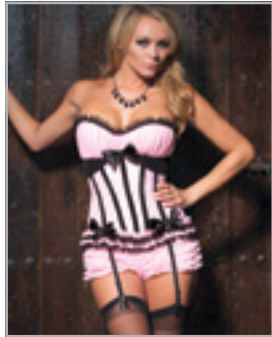
Page 63



3381

Pink/Black
S, M, L, XL

Page 62



3382

Pink/Black
S, M, L

Page 64



3383

Black/Fuchsia
S, M, L, XL

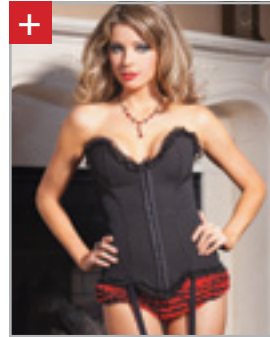
Page 65



3384

Black/Fuchsia
S, M, L, XL

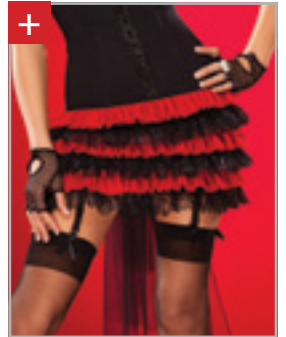
Page 66



3385

Black/Red
S, M, L, XL,
1X/2X, 3X/4X

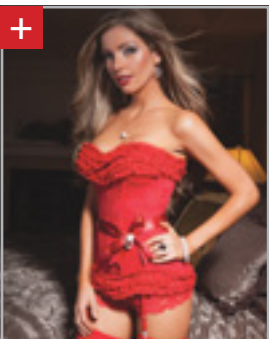
Page 48, 90



3386

Black/Red
O/S, OS/XL

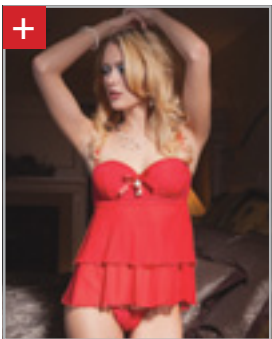
Page 99



3387

Red
S, M, L, XL, 1X/2X

Page 72, 90



3388

Red
S, M, L, XL, 1X/2X

Page 73, 90



3390

Red/Black
S, M, L, XL

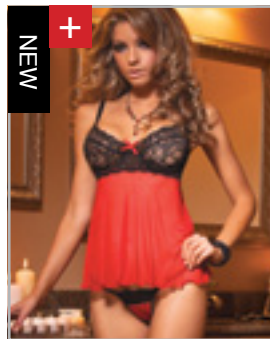
Page 69



3391

Red/Black
S, M, L

Page 70



3392

Red/Black
S, M, L, XL,
1X/2X, 3X/4X

Page 71, 88



3393

Black, Red
S, M, L, XL, 1X/2X

Page 16, 56, 88



3394

Black, Red
S, M, L

Page 15, 57



3395

Black, Red
OS, OS/XL

Page 17, 58, 88, 91



3396

Black, Red
S, M, L, XL

Page 18, 59



3397

Fuchsia/Black
S, M, L, XL, 1X/2X

Page 21, 89



3398

Fuchsia/Black
S, M, L

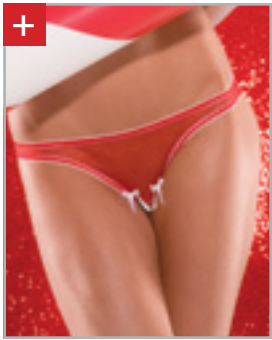
Page 22



3399

Fuchsia/Black
S, M, L

Page 24



3412

Red
O/S, OS/XL

Page 96



3431

Red/White
O/S

Page 100



3481

Red/White
S, M, L

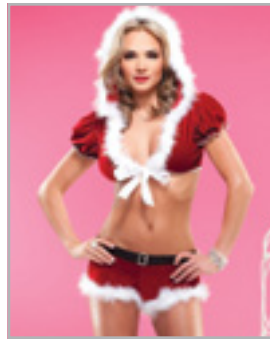
Page 85



3485

Red/White
O/S

Page 99



3487

Red/White
S, M, L

Page 86



3554

Black/Silver
S, M, L, XL

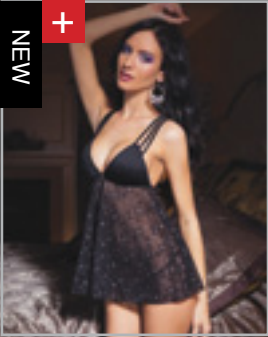
Page 27



3555

Black/Silver
S, M, L

Page 28



3556

Black/Silver
O/S, OS/XL

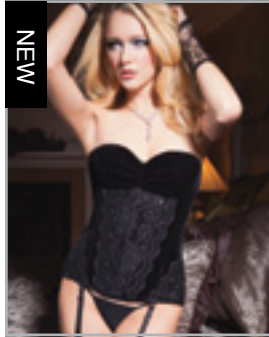
Page 29, 89



3557

Black
S, M, L

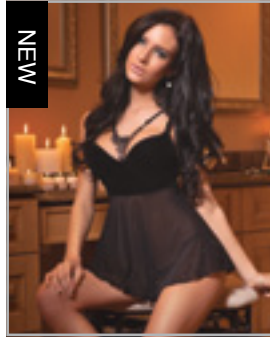
Page 4



3558

Black
S, M, L

Page 5



3559

Black
S, M, L

Page 6



3560

Black
S, M, L

Page 7



3561

Black
S, M, L

Page 8



3562

Black
S, M, L

Page 10



3563

Black
S, M, L

Page 11



3564

Black
O/S

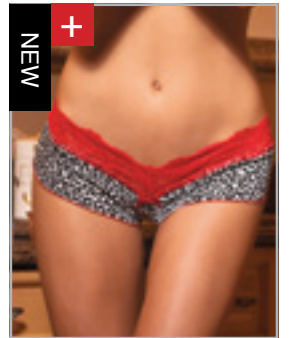
Page 12



3565

Grey Leopard/Red
OS, OS/XL

Page 75



3566

Grey Leopard/Red
OS, OS/XL

Page 76, 93



3567

Red/Black
OS, OS/XL

Page 74, 88



3568

Red/Black
S, M, L

Page 78



3569

Red/Black
S, M, L

Page 79



3570

Red/Black
S/M, M/L

Page 80



3636

Red/White/Black
S/M, M/L

Page 81



3637

Red/Black/White
S, M, L

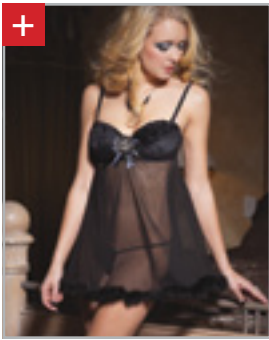
Page 82



3642

Black
S, M, L, XL

Page 38



3643

Black
S, M, L, XL, 1X/2X

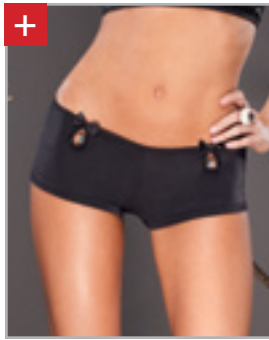
Page 39



3644

Black
S, M, L, XL

Page 40



3647

Black
O/S, OS/XL

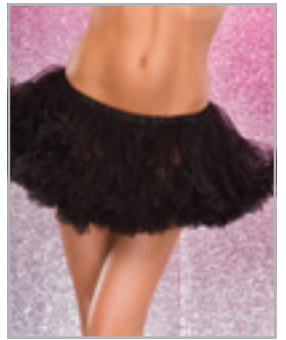
Page 96



3648

Red/Black
S, M, L, XL

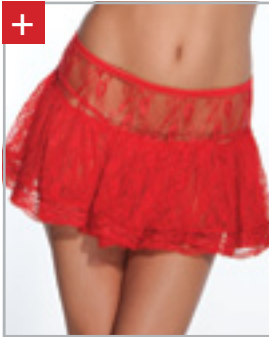
Page 83



3649

Black
O/S

Page 98



3650

Black, Red, White
O/S, OS/XL

Page 98



3657

Black/White
O/S

Page 100



3659

Black/Red
S, M, L, XL

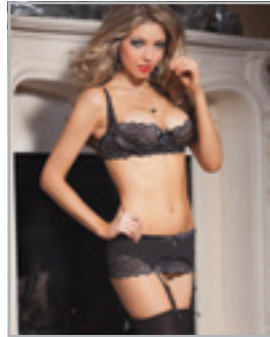
Page 46



3660

White
S/M, M/L

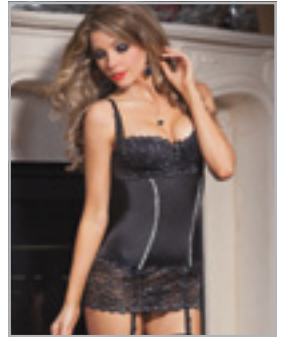
Page 84



3668

Black/Silver
S, M, L

Page 30



3669

Black/Silver
S, M, L, XL

Page 31



3670

Black/Silver
S, M, L

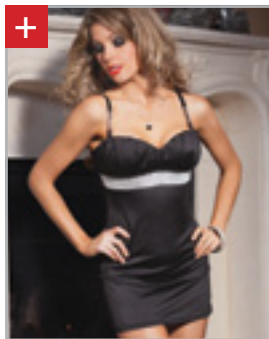
Page 32



3671

Black/Silver
S, M, L

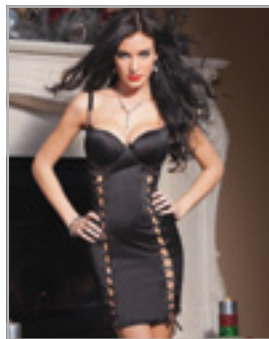
Page 33



3672

Black/Silver
S, M, L, XL, 1X/2X

Page 34



3673

Black/Silver
S, M, L

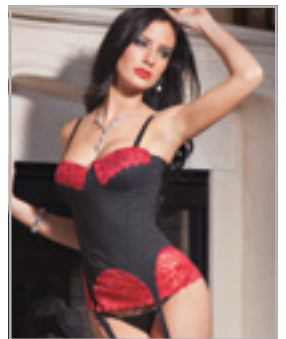
Page 35



3674

Black/Red
S, M, L

Page 49



3677

Black/Red
S, M, L

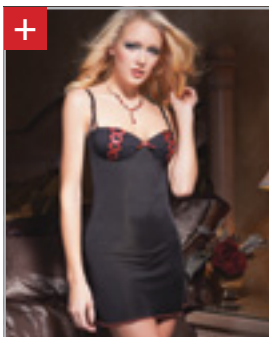
Page 50



3678

Black/Red
S, M, L

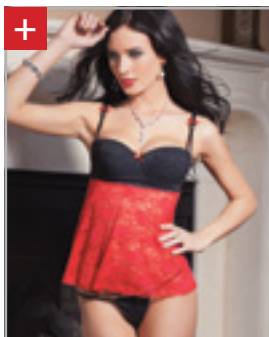
Page 51



3680

Black/Red
S, M, L, XL, 1X/2X

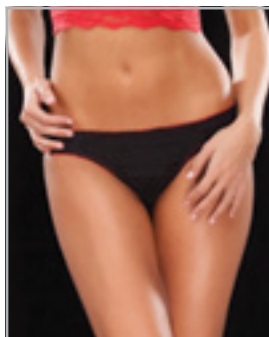
Page 52, 87



3681

Black/Red
S, M, L, XL, 1X/2X

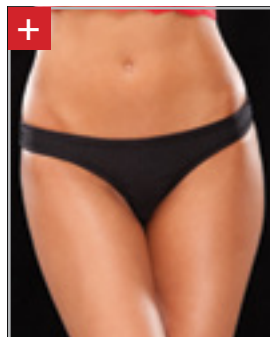
Page 53, 90



3682

Black/Red
S, M, L, XL

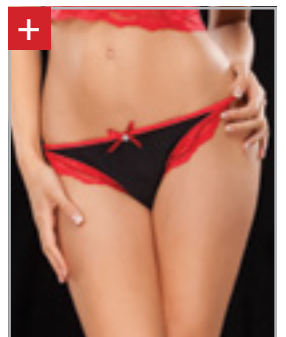
Page 96



3683

Black/Red
O/S, OS/XL

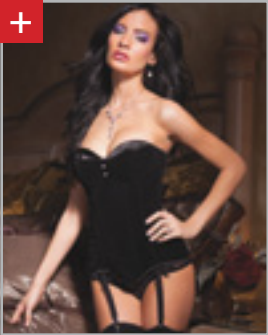
Page 97



3684

Black/Red
O/S, OS/XL

Page 97



3685

Black
S, M, L, XL, 1X/2X

Page 41, 91



3686

Black
S, M, L

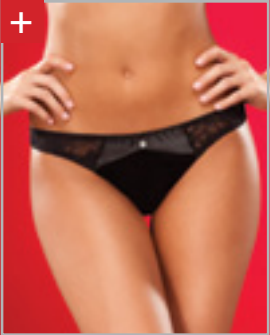
Page 43



3687

Black
S, M, L, XL

Page 42



3688

Black
O/S, OS/XL

Page 97

Size Charts

WOMEN'S SIZES												
Sizes	XS/S	S	S/M	M	M/L	L	L/XL	X L	1X/2X	3X/4X	O/S	OS/XL
Weight	95-110 lbs 43-50kg	100 - 120 lbs 50 - 55kg	110 - 140 lbs 50 - 63.5kg	120 - 150 lbs 55 - 68kg	140 - 170 lbs 63.5 - 77kg	150 - 180 lbs 68 - 81.5kg	170 - 200 lbs 63.5 - 91 kg	180 - 210 lbs 81.5 - 95kg	200 - 230lbs 91 - 104kgv	230-260lbs 104-118kg	120 - 150 lbs 55 - 68kg	170 - 200 lbs 77 - 91kg
Bust	33" - 35" 84-89 cm	34" - 36" 86 - 91cm	35" - 37" 89 - 94cm	36" - 38" 91 - 97cm	37" - 39" 94 - 99cm	38" - 40" 97 - 102cm	39" - 41" 99 - 104cm	40" - 44" 102 - 112cm	44" - 48" 112 - 122cm	48"-52" 122-132"	36" - 38" 91-97cm	40" - 48" 102 - 122cm
Waist	25" - 27" 64-69 cm	26" - 28" 66 - 71cm	27" - 29" 69 - 74cm	28" - 30" 71 - 76cm	29" - 31" 74 - 79cm	30" - 32" 76 - 81cm	31" - 33" 78 - 84cm	32" - 36" 81 - 91cm	36" - 40" 91 - 102cm	40"-45" 102-114cm	28" - 30" 71 - 76cm	32" - 40" 81 - 102cm
Hip	35" - 37" 89-94 cm	36" - 38" 91 - 97cm	37" - 39" 94 - 99cm	38" - 40" 97 - 102cm	39" - 41" 99 - 104cm	40" - 42" 102 - 107cm	41" - 45" 104 - 114cm	42" - 46" 107 - 117cm	46" - 50" 117 - 127cm	50"-55" 127-140cm	38"-40" 97 - 102cm	42" - 50" 107 - 127cm
Cup	A	B	B	B	C	C	C	C/D	C/D	D	B	C/D
Dress	2 - 4	4 - 6	6 - 8	8 - 10	10 - 12	12 - 14	14 - 16	16 - 18	18 - 20	20-22	6 -12	14 - 20

WOMEN'S SIZE CONVERSIONS		
U.S.A	Cup Size	Europe
S : 34	B	75
M : 36	B	80
L : 38	C	85
XL : 40	C/D	90
1X/2X : 44	C/D	95
3X/4X : 48	D	100

Posters

Create some ambiance for your customers by displaying our fantastic photos of our gorgeous models! Free 18 x 24 posters are available with purchase of our product.

Custom posters are also available up to 60" wide.



Banner Stands

Make an impact with our Single or Double sided Banner Stands. Roll up banner stand comes preloaded with custom artwork and can be assembled and collapsed in seconds. Includes a carrying case for easy travel.

Great for trade shows and store displays.

Free with \$10,000 in sales per year at regular wholesale price.



Images

Our pre-formatted images are ready to use on your website. We've done the work for you, just upload and go! USB includes RGB images, logos, PDF catalog and web ready descriptions. Can't wait to get started? Contact our customer service department for a password as all of our web tools are available for immediate download. It's that easy!

For any custom image applications please feel free to contact our graphics department at: graphics@coquette.com

USB-2013
RGB high resolution
images & optimized for web.



Terms and Conditions

New Accounts

First orders must exceed \$500.00 and will be shipped after payment is received by Visa, Mastercard or American Express. Established customers may apply for credit.

Office hours:

MONDAY - FRIDAY

8:30 AM - 5:00 PM E.S.T.

Orders can be phoned in on

our Toll Free Order Line:

Phone: 1-800-668-5477

Fax: 1-888-339-1304

Website: www.coquette.com

E-mail: home@coquette.com

After initial order, orders must exceed \$200.00. Any orders below \$200.00 will have a \$10.00 surcharge applied to the account.

All orders are handled in the order in which they are received.

Please review your order to ensure it is accurate. Changes or additions to orders will not be accepted after the order has been placed.

Credit terms

We accept Visa, Mastercard and American Express. Established customers may apply for terms with the completion of a credit application. Terms or Net 30 will be given when the credit has been approved.

Credit Card

If you are a credit card customer please notify us if there is a new expiry or new credit card number that we should have on file. Our shipping department will call you with your total; if there is no response within 24 hours a \$20 re-stocking fee will apply.

Claims, returns & inquiries

Please check all orders carefully upon receipt of goods for damages or discrepancy in quantities. Any discrepancy must be reported within 5 days of receipt to qualify for a return. All returns require a return authorization number.

To receive return authorization, please call Head Office at 1-800-668-5477.

Returns received without authorization may be refused.

Return authorization forms are available on our web site at: www.coquette.com

Returns will not be accepted for in-store damages, worn garments or overstocked merchandise.

Returns which have been returned back to Coquette within 5 days will be repaired or replaced. Damages that occur during shipping must be claimed with the carrier (UPS, Canada Post, or CanPar). Please keep all original packaging. If the box is discarded Coquette will not accept any damages claimed.

If an order is cancelled prior to the cancel date as outlined there will be a 10% re-stocking fee.

All images are the property of Coquette International Inc., and may not be used or reproduced without permission.

Web images may be downloaded from our website with advance approval from our Customer Service Dept. at home@coquette.com.

High resolution images on CD or through FTP may be provided to customers for approved purposes only. Such CDs or FTP transfers require advance approval of our Graphics Dept, at graphics@coquette.com

Styles, fabrics and packaging subject to change.

Prices subject to change without notice.

COQUETTE INTERNATIONAL INC.

Phone: (519) 623-9881 Fax: (519) 623-2745

Toll Free For Orders (U.S. & Canada)

Tel: 1-800-668-5477

Fax: 1-888-339-1304

E-mail: home@coquette.com

Web Site: www.coquette.com

Head Office

30 Wolseley Court,
Cambridge, Ontario, Canada
N1R 6X3

U.S. Warehouse

20628 Belshaw Ave.
Los Angeles, California
USA 90746

Customer Service

Phone: 1-800-668-5477

Fax: 1-888-339-1304

E-mail: home@coquette.com

Corporate Accounts

Dave George

National Sales Manager

Cell: (310) 745-9401

Tel: 702-405-0244

E-mail: dg@coquette.com

International & Distributor Inquiries

(Excluding the US)

Marty Knudstrup

Coquette Head Office

Tel: 1-800-668-5477 Ext. 286

Fax: 1-888-339-1304

Cell: (519) 404-0878

E-mail: martyk@coquette.com

Fax: 1-888-339-1304

Public Relations

Erin Sue

Coquette Head Office

Tel: 1-800-668-5477 Ext. 288

Cell: 519.591.7824

E-mail: pr@coquette.com

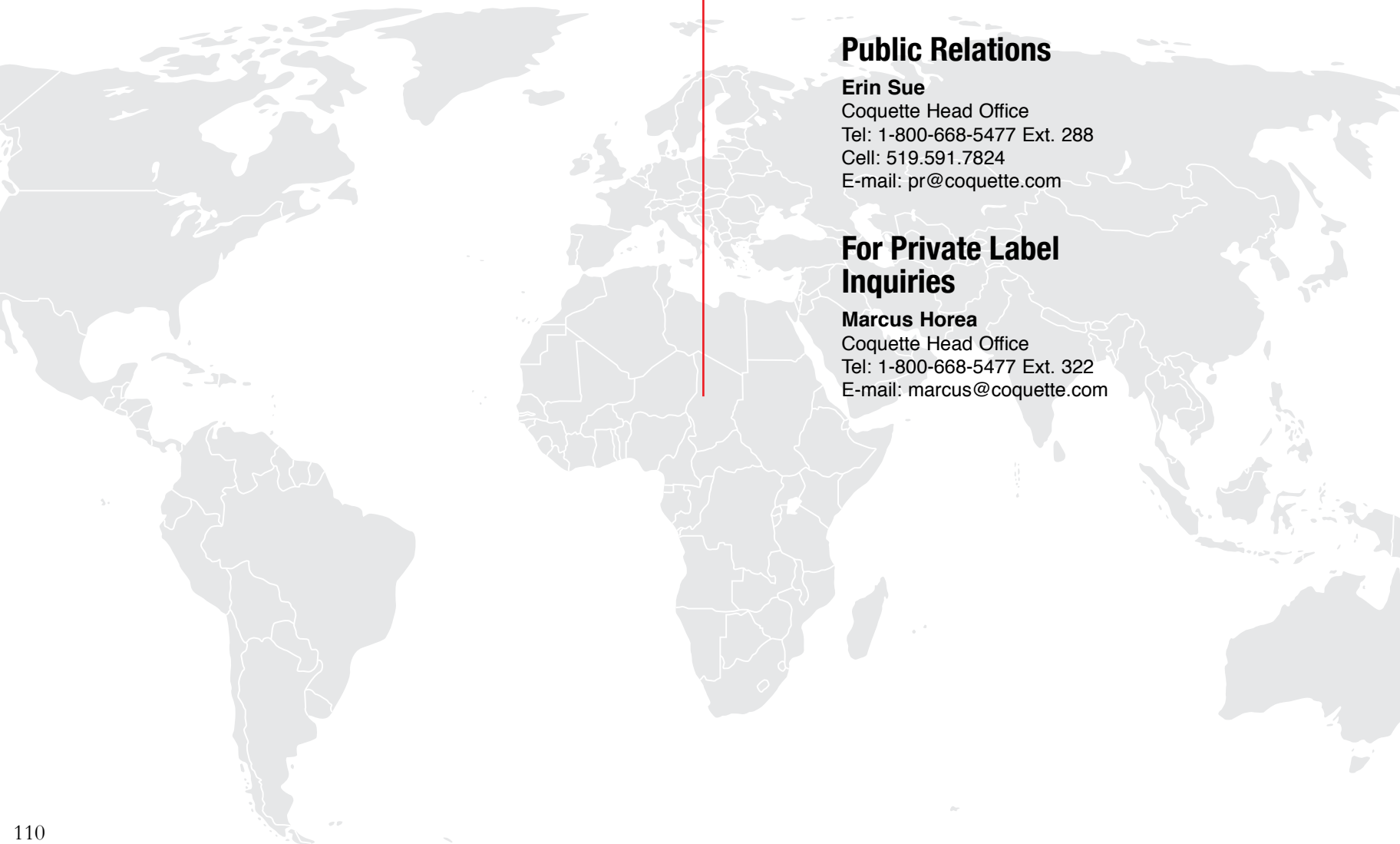
For Private Label Inquiries

Marcus Horea

Coquette Head Office

Tel: 1-800-668-5477 Ext. 322

E-mail: marcus@coquette.com



United States

CO, FL, GA, IA, IL, IN, KY, MI, MN, ND, NE, OH, SD, WI, WY

Benjamin Hoang

Coquette Head Office
Tel: 1-800-668-5477 Ext. 287
Fax: 1-888-339-1304
Cell: (519) 242-8000
Email: benh@coquette.com

AK, AZ, CA, ID, MT, NM, NV, OR, UT, WA

Robyn Meyer

Coquette Head Office
Tel: 1-800-668-5477 Ext. 237
Fax: 1-888-339-1304
Cell: (226) 339-5520
Email: robyn@coquette.com

CT, DC, DE, MA, MD, ME, NH, NJ, NY, PA, RI, VA, VT, WV

Brittany Roefs

Coquette Head Office
Tel: 1-800-668-5477 Ext. 232
Fax: 1-888-339-1304
Cell: (226) 808-5600
Email: brittany@coquette.com

NC, SC, TN

Marty Knudstrup

Coquette Head Office
Tel: 1-800-668-5477 Ext. 286
Fax: 1-888-339-1304
Cell: (519) 404-0878
Email: martyk@coquette.com

AL, AR, KS, LA, MO, MS, OK, TX

Sue Kelln

World Trade Center
2050 Stemmons Freeway #15820
Dallas, TX 75207
Toll Free: 1-888-783-5356
Fax: (512) 321-1241
Cell: (512) 657-8698
Email: wesell@swbell.net

PR

Mariano Roman

Showroom:
M-32 Ponce de Leon St. Villa España
Bayamon, PR 00961
Tel/Fax: (787) 798-4413
Cell: (787) 649-3219
Email: romasales@prtc.net

Canada

ON, NF, NS, PEI

Marty Knudstrup

Coquette Head Office
Tel: 1-800-668-5477 Ext. 286
Fax: 1-888-339-1304
Cell: (519) 404-0878
Email: martyk@coquette.com

AB, MB, SK

Brittany Roefs

Coquette Head Office
Tel: 1-800-668-5477 Ext. 232
Fax: 1-888-339-1304
Cell: (226) 808-5600
Email: brittany@coquette.com

BC, YK

Linda Martin

Showroom: FX Fashion Center
#272-1951 Glen Drive
Vancouver, BC Canada
V6A 4J6
Tel: (604) 684-1952
Fax: (604) 684-1933
Toll Free Phone: 1-877-684-1952
Toll Free Fax: 1-866-684-1933
E-mail: info@lindamartinandco.com

PQ, NB

Corinne Panchyshyn

Coquette Head Office
Tel: 1-800-668-5477
Fax: 1-888-339-1304
Cell: 514-546-2055
Email: cp@coquette.com

Europe

Germany, Netherlands, Belgium, Luxembourg

M & C GmbH

Markus Mader

Kreuzstr. 13
80331 München
Tel: +49 (0)89 - 545 062 52
Fax: +49 (0)89 - 545 062 55
Email: info@mucgmbh.de
Web: www.mucgmbh.de

Italy

Mc Falland s.r.l.

Francesca Cotechini

Via dell'Industria 36
63900 Fermo (FM)
Tel: +39-0734-640012
Fax: +39-0734-649217
Email: sales@mc-falland.it
Email: Francesca@mc-falland.it
Website: www.mc-falland.it

Greece

B. & L. Mourouti O.E.
66, Gr. Digeni Str.
Ag. Dimitrios 173 42
Athens
Tel: 0030 210 9942 105
Fax: 0030 210 9966 703
Email: info@billysfashion.gr
www.billysfashion.gr

Portugal

Maria Da Luz Rocha
Unipessoal Lda.
Jorge Gil
Rua Da Firmeza 570
4000-226 Porto, Portugal
Tel.: + 351 (0) 96 697 0301
Fax: + 351 (0) 22 340 6340
Email: jmf gil@mail.telepac.pt

United Kingdom, France, Denmark, Sweden & Norway

Blue Moon Lingerie Ltd
Richard Harris
Unit A, 376 Ringwood Rd.
Poole, BH12 3LT, United Kingdom
Tel: +44 (0) 1202 741 136
Fax: +44 (0) 1202 741 142
Email: info@bluemoonlingerie.com

Please direct all other European sales inquiries to
martyk@coquette.com

Africa, Middle East, South America

Canadex International Trading

Harry Kaprielian

5255 Henri Bourassa W., Suite 200,
St. Laurent PQ H4R 2M6 Canada
Tel: 1-514-337-0946
Fax: 1-514-337-0857
E-mail: canadex@canadextrading.com
www.canadextrading.com

Australia & New Zealand

Kiss Couture

Shayne & Shiela Kiss

PO Box 209 West Burleigh,
QLD. Australia 4219
Tel: 011 617 5535 2600
Fax: 011 617 5576 0200
E-mail: sales@kisscouture.com.au

Japan

Chely Hope Co. Ltd.

Toshio Yamasaki

1-5-10-601 Kamiuma,
Setagaya-Ku,
Tokyo, 154-0011 Japan
Tel: +81-3-5433-9793
Fax: +81-3-5433-9794
E-mail: chelyip@cello.ocn.ne.jp

Pijel Ltd.

Kinji Nakagawa

No.2-2-5 Kominatodori Chuoku
Kobe 650-0026 Japan
Tel: +81-7-8362-6977
Fax: +81-7-8362-6980
E-mail: pijel@ntf.biglobe.ne.jp

Mexico

Black Satin SA

Karla and Pamela Marcos Dieck

Ave. Gomez Morin 2003 Col. Carrizalejo,
Plaza Carrizalejo L-12, CP 66254
San Pedro, Garza Garcia,
Nuevo Leon, Mexico
Phone: 818-303-1655
Email: karla@blacksatin.com.mx
pamela@blacksatin.com.mx

Russia

Erotic Fantasy

Dmitriy Egorov

141400 Moscow region, Khimki,
Nagornoe shosse 2, office 4A.
Phone: +7 495 783-52-85
Website: www.eroticfantasy.ru
Email: info@eroticfantasy.ru



COQUETTE.COM